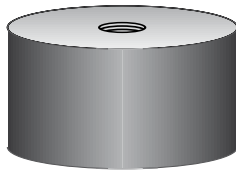


SIMPLE BUFFERS AMC MECANOCAUCHO® TYPE E

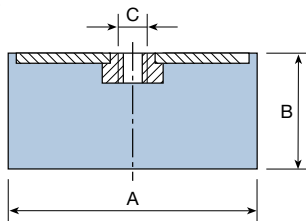
APPLICATIONS

AS BUFFERS: In any case for limiting a flexible element.

- End of stroke of spring or damper.
- End of stroke of cranes and hoists.
- Setting of fragile material in packings.



TYPE E



| A | B | C | KOMPRESION | | CODE | |
|------|------|------|------------------|------------------|--------|--------|
| | | | LOAD max. daN | DEFLECT. m.m. | | |
| 12,5 | 10 | M-5 | 12 | 2 | 111001 | |
| | 15 | | 10 | 3 | 111002 | |
| | 20 | | 8 | 3,5 | 111003 | |
| 16 | 10 | M-5 | 20 | 1,5 | 111004 | |
| | 15 | | 20 | 3 | 111005 | |
| | 20 | | 15 | 4 | 111006 | |
| | 25 | | 15 | 5 | 111007 | |
| 20 | 8,5 | M-6 | 40 | 1,5 | 111008 | |
| | 15 | | 35 | 4 | 111009 | |
| | 20 | | 30 | 5 | 111010 | |
| | 25 | | 30 | 5,5 | 111011 | |
| | 30 | | 25 | 7 | 111012 | |
| 25,5 | 10 | M-6 | 80 | 2 | 111091 | |
| | 15 | | 60 | 3,5 | 111092 | |
| | 20 | | 55 | 4,5 | 111093 | |
| | 25 | | 50 | 6 | 111094 | |
| | 30 | | 50 | 8 | 111095 | |
| | 25,5 | 10 | M-8 | 80 | 2 | 111013 |
| | | 15 | | 60 | 3,5 | 111014 |
| | | 19 | | 55 | 4,5 | 111015 |
| | | 22 | | 50 | 5,5 | 111016 |
| 30 | 25 | M-8 | 50 | 6 | 111017 | |
| | 30 | | 50 | 8 | 111018 | |
| | 40 | | 50 | 10 | 111019 | |
| | 15 | | 90 | 3 | 111020 | |
| | 22 | | 80 | 5 | 111021 | |
| | 25 | | 75 | 6,5 | 111101 | |
| | 30 | | 70 | 8 | 111022 | |
| | 40 | | 60 | 9 | 111023 | |
| 40 | 20 | M-8 | 160 | 5 | 111112 | |
| | 25 | | 150 | 6 | 111113 | |
| | 28 | | 150 | 6 | 111114 | |
| | 30 | | 150 | 6 | 111115 | |
| | 35 | | 120 | 8 | 111116 | |
| | 40 | 40 | M-10 | 120 | 10 | 111117 |
| | | 45 | | 120 | 11 | 111118 |
| | | 20 | | 160 | 5 | 111024 |
| | | 25 | | 150 | 6 | 111110 |
| | | 28 | | 150 | 6 | 111025 |
| 50 | 30 | M-10 | 150 | 6 | 111111 | |
| | 35 | | 120 | 8 | 111026 | |
| | 40 | | 120 | 10 | 111027 | |
| | 45 | | 120 | 11 | 111028 | |
| | 20 | | 300 | 5 | 111121 | |
| | 25 | | 300 | 6 | 111029 | |
| | 30 | | 275 | 7 | 111122 | |
| | 35 | | 250 | 8 | 111030 | |
| 60 | 40 | M-10 | 210 | 10 | 111123 | |
| | 45 | | 190 | 11 | 111031 | |
| | 50 | | 170 | 11 | 111124 | |
| | 60 | | 150 | 11 | 111032 | |
| 70 | 25 | M-10 | 400 | 6 | 111033 | |
| | 36 | | 300 | 9 | 111034 | |
| | 45 | | 250 | 11 | 111035 | |
| | 60 | | 200 | 12 | 111036 | |
| 75 | 35 | M-10 | 450 | 8 | 111037 | |
| | 50 | | 350 | 11 | 111038 | |
| | 60 | | 300 | 12 | 111039 | |
| | 70 | | 300 | 14 | 111040 | |
| 80 | 25 | M-12 | 650 | 7 | 111041 | |
| | 40 | | 500 | 9 | 111042 | |
| | 45 | | 500 | 10 | 111043 | |
| | 55 | | 450 | 11 | 111044 | |
| 95 | 30 | M-14 | 950 | 7 | 111045 | |
| | 40 | | 600 | 9 | 111046 | |
| | 50 | | 550 | 10 | 111047 | |
| | 55 | | 550 | 11 | 111048 | |
| | 70 | | 500 | 13 | 111049 | |
| 105 | 75 | M-16 | 450 | 14 | 111050 | |
| | 40 | | 1.200 | 8 | 111051 | |
| | 55 | | 1.000 | 11 | 111052 | |
| | 60 | | 800 | 12 | 111053 | |
| 120 | 75 | M-16 | 700 | 13 | 111054 | |
| | 50 | | 1.200 | 9 | 111055 | |
| | 75 | | 1.000 | 13 | 111056 | |
| 130 | 100 | M-16 | 800 | 16 | 111057 | |
| | 50 | | 1.500 | 9 | 111058 | |
| | 75 | | 1.200 | 13 | 111059 | |
| 150 | 100 | M-20 | 1.000 | 16 | 111060 | |
| | 50 | | 1.600 | 9 | 111062 | |
| | 75 | | 1.450 | 13 | 111063 | |
| | 100 | | 1.200 | 16 | 111064 | |
| 150 | 50 | M-20 | 1.800 | 9 | 111065 | |
| | 75 | | 1.650 | 13 | 111066 | |
| | 100 | | 1.400 | 16 | 111067 | |

NEW REFERENCES

* In order to adapt its products to the state of the art, AMC .A. reserves the right to modify the conception and manufacture of the materials presented in this catalogue without prior notice