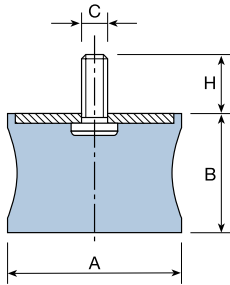
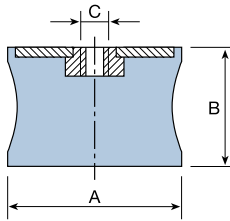


DIABOLO BUFFERS AMC MECANOCAUCHO®



TYPE A



TYPE C

TYPE	A	B	C	H	DYNAMIC		STATIC		CODE
					LOAD max. daN	DEFLECTION m m.	LOAD max. daN	DEFLECTION m m.	
F.3	30	23	M-8	20	90	9	40	5	114001
F.7	44	42	M-8	20	100	10	50	6	114002
F.1	60	44	M-8	20	100	10	40	4	114003
F.2	60	44	M-8	20	200	12	75	5.5	114004
F.4	60	60	M-10	25	350	15	150	8	114005
F.8	60	31	M-10	25	275	14	100	7	114006
F.5	80	65	M-14	35	800	16	300	9.5	114007
F.6	95	70	M-16	45	1000	18	400	9.5	114008

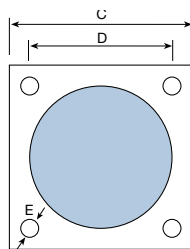
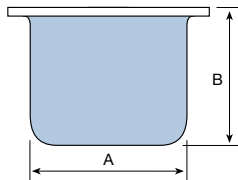
TYPE	A	B	C	H	DYNAMIC		STATIC		CODE
					LOAD max. daN	DEFLECTION m m.	LOAD max. daN	DEFLECTION m m.	
F.3	30	23	M-8	20	90	9	40	5	114011
F.7	44	42	M-8	20	100	10	50	6	114012
F.1	60	44	M-8	20	100	10	40	4	114013
F.2	60	44	M-8	20	200	12	75	5.5	114014
F.4	60	60	M-10	25	350	15	150	8	114015
F.8	60	31	M-10	25	275	14	100	7	114016
F.5	80	65	M-14	35	800	16	300	9.5	114017
F.6	95	70	M-16	45	1000	18	400	9.5	114018

APPLICATIONS

AS BUFFERS: In any case for limiting a flexible element.

- End of stroke of spring or damper.
- End of stroke of cranes and hoists.
- Setting of fragile material in packings.

CYLINDRICAL BUFFERS AMC MECANOCAUCHO®



TYPE	A	B	C	D	H	DYNAMIC		ENERGY a 1 m/s Kg. m.	CODE
						LOAD Kg.	DEFLECTION mm.		
T-150	150	125	185	150	13.5	5000	50	125	117001
T-250	250	208	315	250	14.5	40000	100	1,250	117002

APPLICATIONS

AS BUFFERS: In any case for limiting a flexible element.

- End of stroke of spring or damper.
- End of stroke of cranes and hoists.
- Setting of fragile material in packings.