



MARINE MOUNT

DESCRIPTION

The Marine-type AMC-Mecanocaucho® mounts are ideal for mobile applications thanks to their rugged architecture.

Their special design offers different stiffnesses on the three axes, they are antivibration mounts with great vertical elasticity, great longitudinal stiffness and optimal lateral stiffness to offer extra isolation on this axis.

TECHNICAL CHARACTERISTICS

-The top part of the hood has a cross-shaped stamp, which improves its stiffness in mobile applications and also improves the evacuation of oils or liquid which splash onto it.

-The metal parts have an anticorrosive treatment which is suitable for outdoor applications. RoHS compliant.

-The mounts are clearly identified, as the bases are engraved with the type and hardness.

-They have an interlocking metal component that provides a fail-safe protection for mobile applications. This device limits the ascending vertical movement when the mounting is submitted to shocks at traction.

-The top part protects the elastomer inside from possible dripping oil, diesel, ozone and ultraviolet emissions that may cause major damage to the rubber.

-For marine engine applications, contact the AMC-Mecanocaucho® technical department.

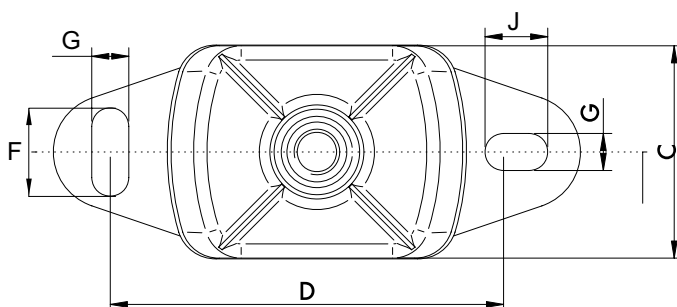
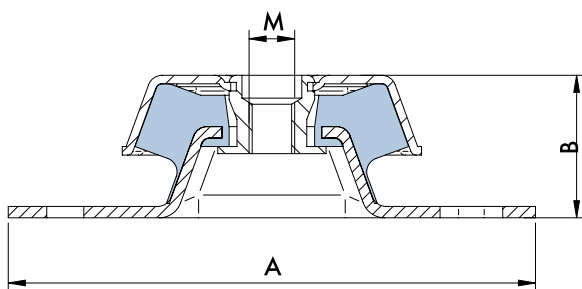
The different stiffnesses for each axis make it possible to offer major flexibility in the direction perpendicular to the crankshaft/shaft of the motor. This provides more effective isolation from vibrations of all types of engines.

APPLICATIONS

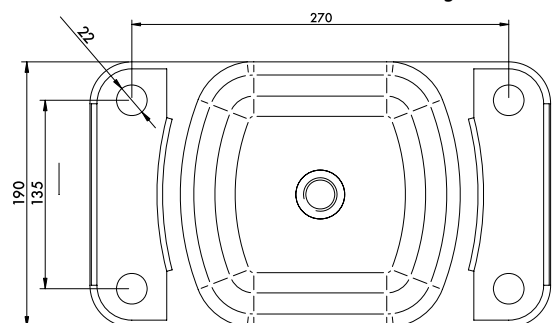
In mobile rotating machines that need a major isolation capacity from vibrations and noises, such as:

- Pumps
- Marine-Land units
- Mobile electrical panels
- Industrial vehicles
- Compressors
- Ventilators
- Marine Propellers

Marine Certificate



Drawing Marine XL



MARINE TYPE MOUNT

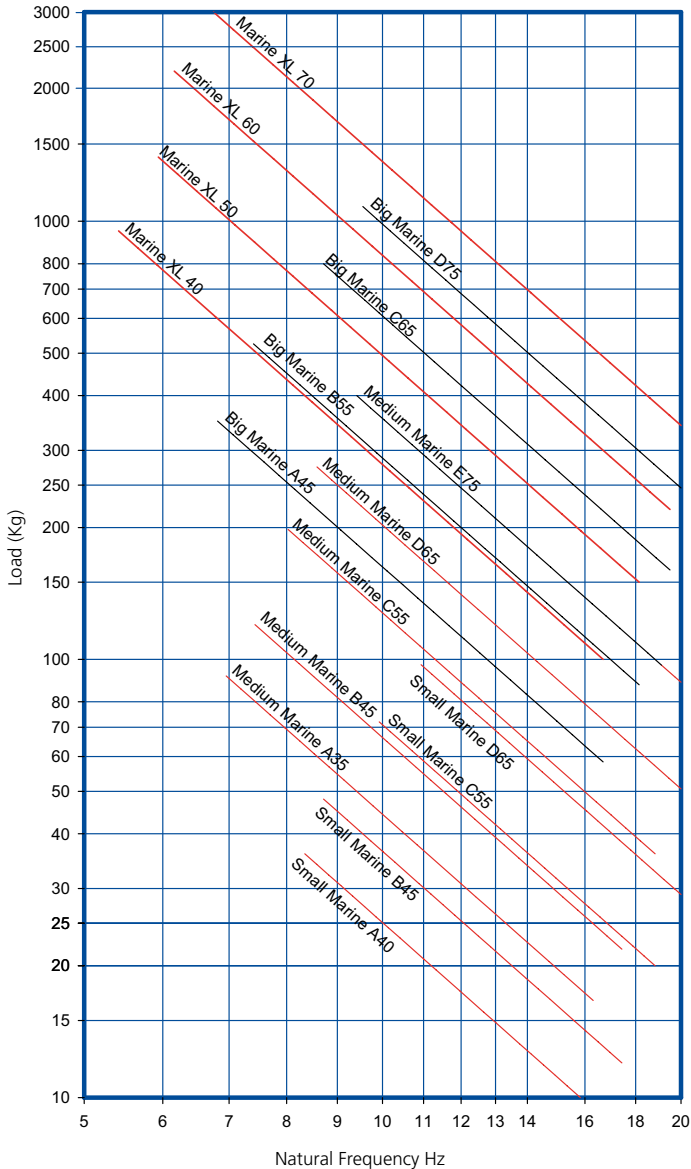
TIPO	A	B	C	D	F	G	J	M	AMC	CODE	CODE	CODE	CODE	CODE	CODE	WEIGHT (g)
										35 Sh	40 Sh	45 Sh	55 Sh	65 Sh	75 Sh	
SMALL	120	38,5	60	100	14	11	14	M-12	Ref	*	136001	136002	136003	136004	136005	397
									Load (kg)		35	45	70	95	110	
MEDIUM	183	50	75	140	30	13	20	M-16	Ref	136021	*	136022	136023	136024	136025	857
									Load (kg)	95		120	220	280	400	
LARGE	228	68	112	182	34	18	26	M-20	Ref	*	*	136041	136042	136043	136044	2250
									Load (kg)			350	525	800	1080	
XL	330	112	190	270	22	22	26	M-24	Ref	*	136061		136062 ^(a)	136063 ^(b)	136064 ^(c)	9600
									Load (kg)		*	950	1400	2200	3000	

* Manufacture under request.

^(a) CODE 50 Sh / ^(b) CODE 60 Sh / ^(c) CODE 70 Sh

DYNAMIC MARINE MOUNT

AMC NATURAL FREQUENCIES
MECANOCAUCHO® DYNAMIC MARINE MOUNT



MARINE MOUNT DEFLECTION

AMC LOAD DEFLECTION GRAPHS
MECANOCAUCHO® MARINE TYPE MOUNT

