



SCH

DESCRIPTION

The AMC-Mecanocaucho® SCH type mounts are made of two parts of rubber, one of which bears an inside metal bushing which acts as a guide through the machine anchoring screw.

It is installed pre-compressed on the actual machine frame, whose thickness "E" determines the degree of precompression

TECHNICAL CHARACTERISTICS

This antivibration mount is ideal for applications of major dynamic loads where movement control is necessary, such as in the cabins of all types of mobile vehicles. It also offers optimal stability, as well as good attenuation of impacts and vibrations.

APPLICATIONS

-Vehicle cabins./-Public works and agricultural vehicles, etc.

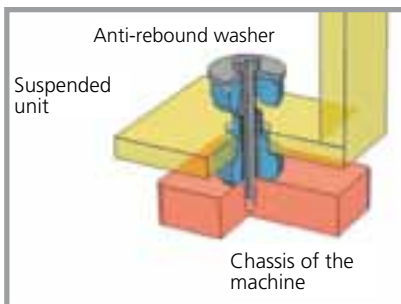
ASSEMBLY INSTRUCTIONS

The SCH mounts should be assembled according to the following installation instructions. There are two possible configurations, see assembly 1 and assembly 2, for which the recommendations given in the following chart must be observed. They can be installed in plates of different thicknesses according to the Tmax and Tmin values given in the table at the bottom. The load vs. deformation curves will vary according to the thickness of the plate on which the mount is to be installed.

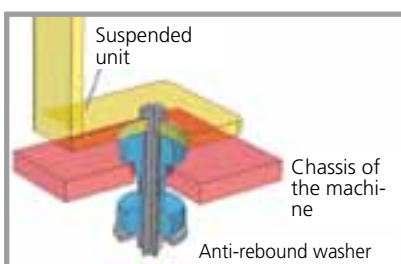


REF	R	Q	Tmax	Tmin
SCH 50	1,5	31,8	14	12,5
SCH 65	2,5	38,5	22	19
SCH 90	3	56,5	29	25

- Assembly 1



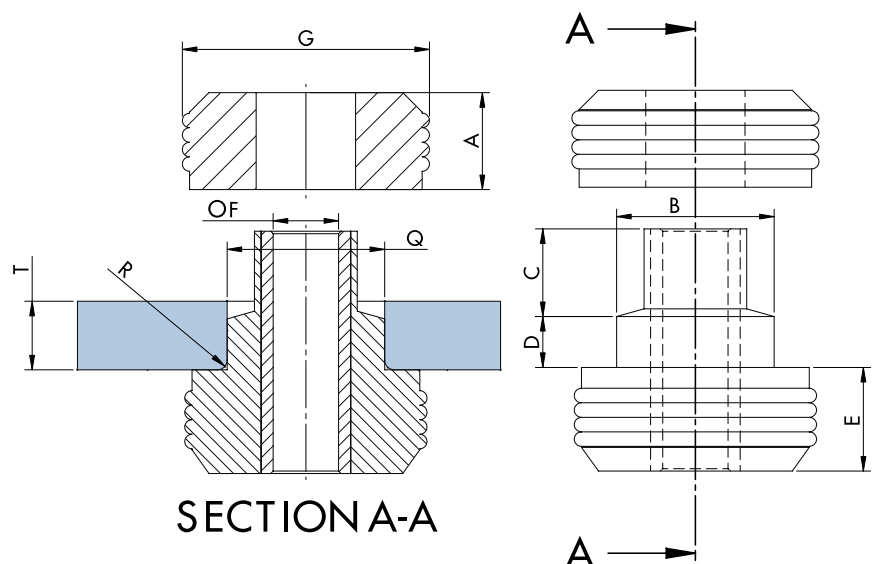
- Assembly 2



WASHERS

Characteristics of the installation washers.

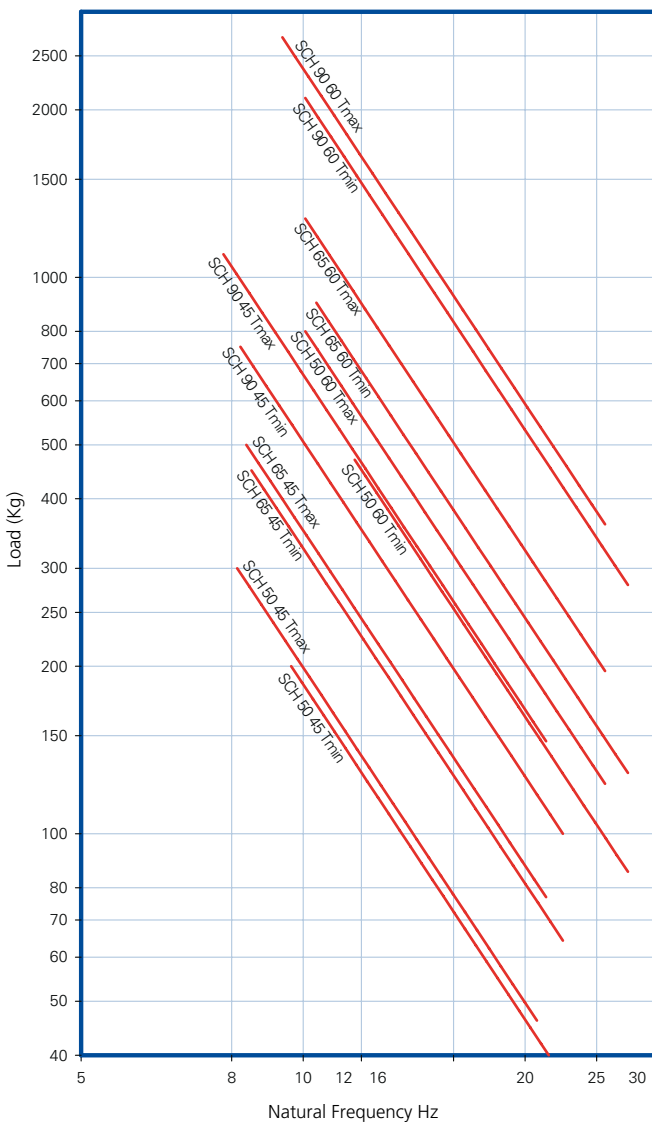
REF	Øext	Øint	THICKNESS	CODE
SCH 50	54	13.5	4	608099
SCH 65	67	16.5	5	608100
SCH 90	96	22	6	608101



TYPE	A	B	C	D	E	F	G		REF 45 Sh	REF 60 Sh	WEIGHT (g)
SCH 50	20	32,5	18.1	10.5	21.4	13.5	48	Max load	80	130	153
								Ref	138501	138504	
SCH 65	22.5	39.5	24	15	23	16.5	64	Max load	120	260	350
								Ref	138502	138505	
SCH 90	25	58	29	19	25	22.5	90	Max load	260	450	675
								Ref	138503	138506	

DYNAMIC SCH

AMC NATURAL FREQUENCIES
MECANOCAUCHO® SCH TYPE



SCH DEFLECTION

AMC LOAD DEFLECTION GRAPHS
MECANOCAUCHO® SCH TYPE

