

# Gran Akustik + Sylomer®: Models and dimensions

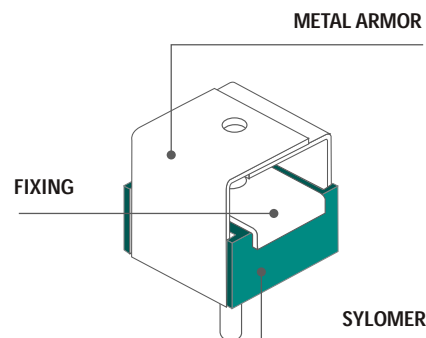
## PRODUCT DESCRIPTION

These antivibration mounts have been conceived for suspension from false ceilings, vibrating pipelines and machinery that has to be suspended.

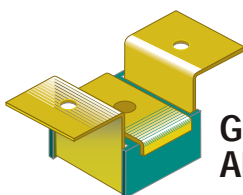
The excellent properties of the Sylomer® microcelular polyurethane achieve elevated isolation values as opposed to other mounts using rubber or cork, or a combination of both. These antivibration mounts are manufactured in two special mixes of

Sylomer® to adapt better to the load of each application.

A great variety of fixing windows and elements facilitate installation and adapt better to each type of job. Their rugged metal parts can withstand tensile stresses from 650 to 1000 Kg. They are supplied with an anticorrosive treatment that can withstand the toughest environments.

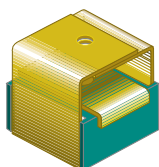
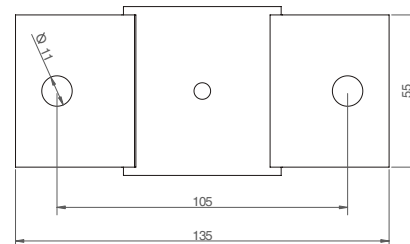
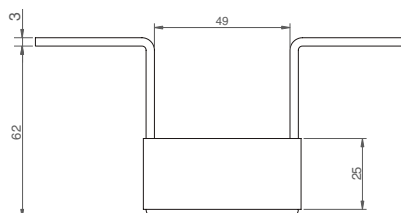


## TYPE OF METAL ARMOR



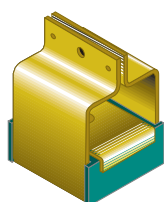
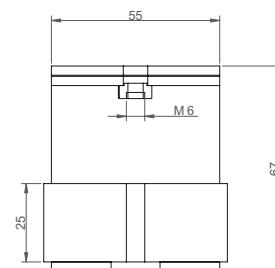
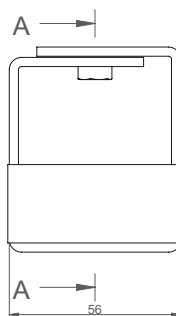
**Gran Akustik 1**

It is secured to the ceiling with two holes.



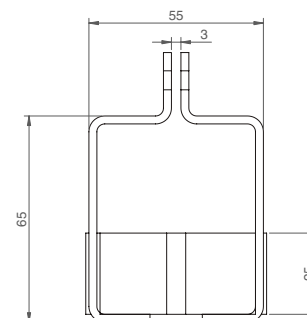
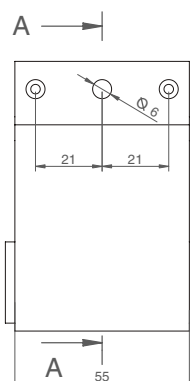
**Gran Akustik 2**

It is secured directly to the ceiling by means of a screw.



**Gran Akustik 3**

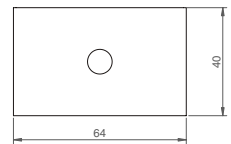
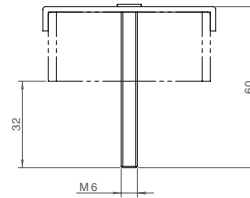
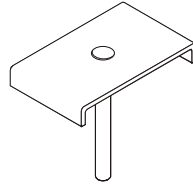
It is secured directly to the ceiling by means of one screw and to the "inverted double T" type profile thanks to the design of its metal armor.



## TYPE OF FIXING

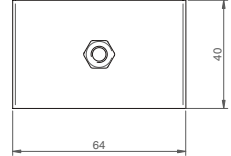
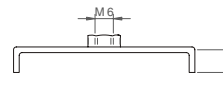
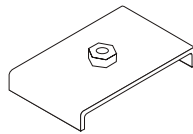
For installations where M6 male fixing is required, the recommended fixing is **Type A**.

### TYPE A



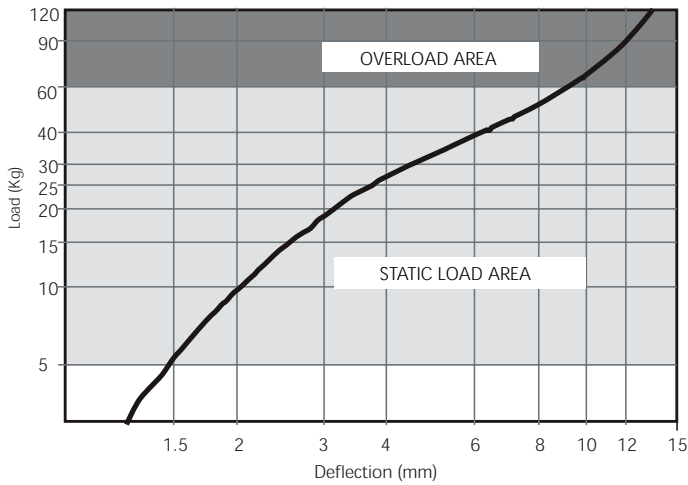
For installations where M6 female fixing is required, the recommended fixing is **Type B**.

### TYPE B

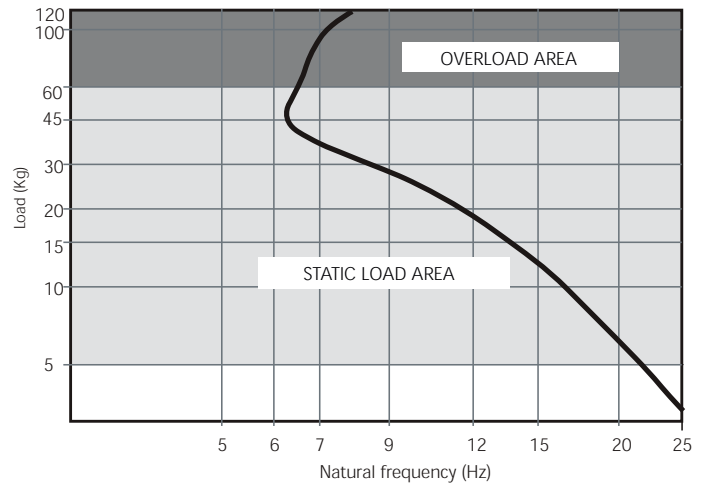


## TYPES OF SYLOMER

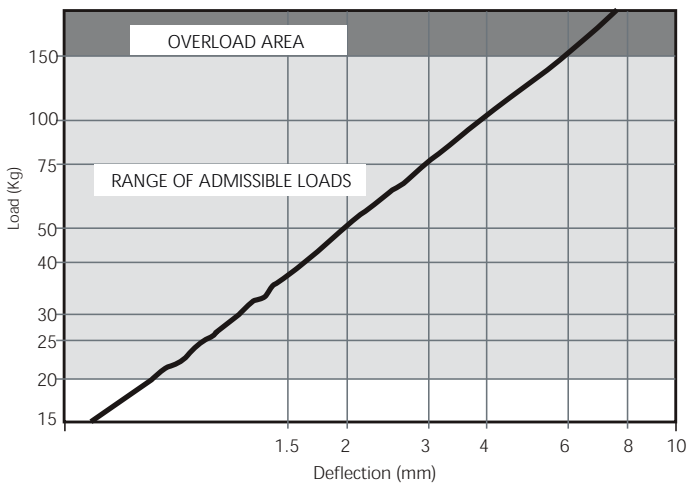
LOAD DEFLECTION GRAPH  
Gran Akustik + Sylomer **60**



NATURAL FREQUENCY GRAPHS  
Gran Akustik + Sylomer **60**



LOAD DEFLECTION GRAPH  
Gran Akustik + Sylomer **150**



NATURAL FREQUENCY GRAPHS  
Gran Akustik + Sylomer **150**

