



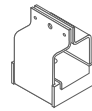
TYPE B 



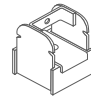
Akustik 1



Akustik 2



Akustik 3



Akustik Rapid

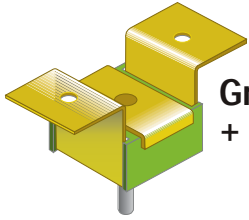
# Sylomer® 150

Description

Summary

(Kg.)  
Max. Load.

Ref.

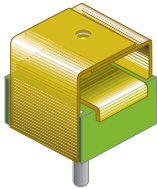


**Gran Akustik 1  
+ Sylomer® 150 TYPE A**

It is secured directly to the ceiling with two holes and to the profile by means of a "type A" male screw.

**150**

**23617**

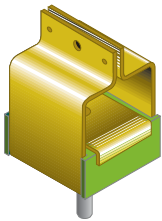


**Gran Akustik 2  
+ Sylomer® 150 TYPE A**

It is secured directly to the ceiling with one screw and to the profile by means of a "type A" screw.

**150**

**23621**

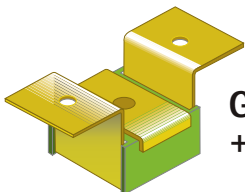


**Gran Akustik 3  
+ Sylomer® 150 TYPE A**

It is secured directly to the ceiling by means of one screw and to the "inverted double T" type profile thanks to the design of its metal armor.

**150**

**23623**

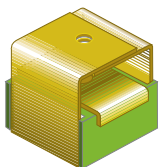


**Gran Akustik 1  
+ Sylomer® 150 TYPE B**

It is secured directly to the ceiling by means of two screws and to the profile by means of a "type B" female fixing.

**150**

**23625**

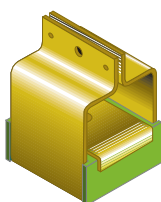


**Gran Akustik 2  
+ Sylomer® 150 TYPE B**

It is secured directly to the ceiling by means of one screw and to the profile by means of a "type B" female fixing.

**150**

**23629**



**Gran Akustik 3  
+ Sylomer® 150 TYPE B**

It is secured directly to the ceiling by means of one "type B" female screw and to the "inverted double T" type profile thanks to the design of its metal armor.

**150**

**23631**